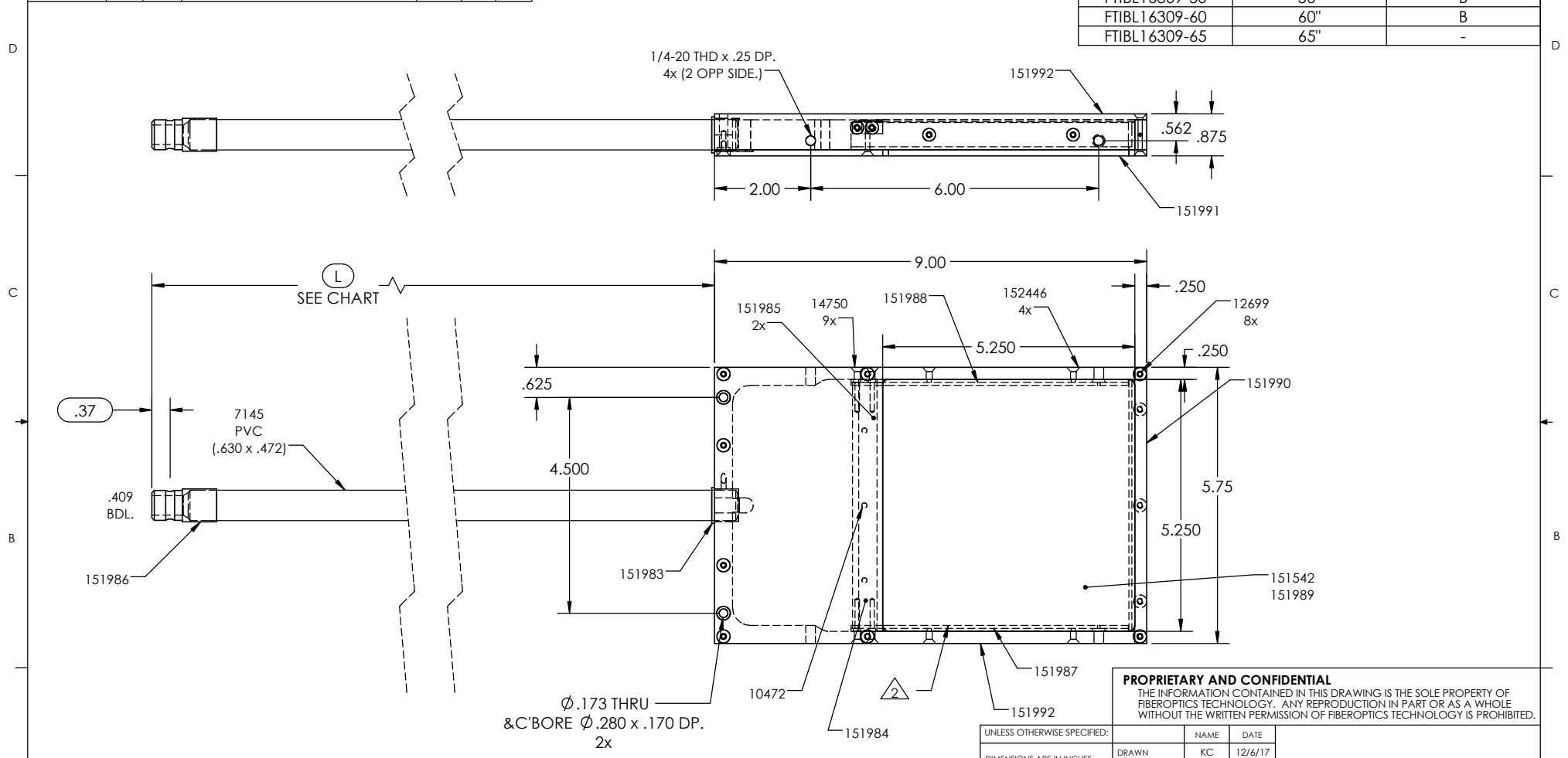


DATE	SYM	ECO#	REVISION RECORD	AUTH.	DR.	CK.
1/2/17	SEE CHART	2618	REDRAWN IN SOLIDWORKS	MH	KC	RJM
07/26/2022	SEE CHART	465	ADDED COPPER TAPE (161607)	RH	JFC	MH

Part Number	Length (L)	Rev
FTIBL16309	36"	D
FTIBL16309-40	40"	B
FTIBL16309-50	50"	B
FTIBL16309-60	60"	B
FTIBL16309-65	65"	-



- NOTES:
- 1) FIBER 66NA/.002
 - 2) APPLY REFLECTIVE TAPE TO THE BOTTOM & SIDES OF 5 x 5 OPENING
 - 3) SEE SHEET TWO FOR FIBER SUBASSEMBLY

PROPRIETARY AND CONFIDENTIAL
 THE INFORMATION CONTAINED IN THIS DRAWING IS THE SOLE PROPERTY OF FIBEROPTICS TECHNOLOGY. ANY REPRODUCTION IN PART OR AS A WHOLE WITHOUT THE WRITTEN PERMISSION OF FIBEROPTICS TECHNOLOGY IS PROHIBITED.

UNLESS OTHERWISE SPECIFIED:		NAME	DATE
DRAWN		KC	12/6/17
CHECKED		MH	12/18/17
ENG APPR.		MH	12/18/17
MFG APPR.			
Q.A.			
INTERPRET GEOMETRIC TOLERANCING PER:			
MATERIAL:			
FINISH:			
DO NOT SCALE DRAWING			

TITLE:		
5 x 5 BACKLIGHT		
SIZE	DWG. NO.	REV
B	SEE CHART	SEE CHART
SCALE: 1:2	WEIGHT:	SHEET 1 OF 2