

# Fiber Optic Accessories



BLFO-RND500 - 1/2"  $\varnothing$ 3/4"

Round UV channel for outdoor application  
6ft length (1.8m)

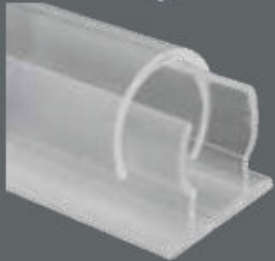
BLFO-RND-CPL

Coupler joint sections  
 $\varnothing$ 7/8" (22mm)



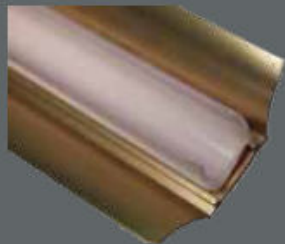
BLFO-C14-13 - 1/2" 5/8" x 5/8"  
BLFO-C14-10 - 3/8" 1/2" x 1/2"

Mounting channel - indoor  
Holds fiber in straight lines  
6ft length



BLFO-BT500- 1/2" 3/4" x 3/4"  
BLFO-BT375- 3/8" 5/8" x 5/8"

2 parts UV channel for outdoor application  
6ft length



BLFO-BFLY500 - 1/2"  
BLFO-UVT500 - Top 1/2" x 2-1/4"

Butterfly channel - indoor/outdoor  
Mounting channel with built-in reflectors  
6ft length

# Fiber Optic Accessories



BLFO-PCL 500 - 1/2"  
BLFO-PCL 375 - 3/8"  
BLFO-PCL 250 - 1/4"

P-Clip - Indoor  
Plastic mounting clip for securing fiber  
Sold individually, usually 1/ft required



BLFO-EC500 - 1/2"  
BLFO-EC500 - 3/8"  
BLFO-EC500 - 1/4"

End cap  
Reflective surface to redirect light back  
into the fiber  
Sold individually



BLFO-CNR500-45  
BLFO-CNR500-90  
BLFO-CNR375-45  
BLFO-CNR375-90

UV corner guide 45° or 90°



BLFO-CUTTER-A

Aluminium cutter for fiber