

# LIGHT SOURCES

## LO100

100-Watt  
LED Light Source

*A Industrial LED light engine 2x  
brighter than halogen!*



LO50 is the first LED light source more powerful than Halogen.

Independent on/off switch to maintain intensity setting.



Port accepts all major device manufacturer's cables;

High temperature shut-off indicator.

Analog dimmer controls output intensity from 10% to 100% output.



Back of FTIII22025-R4EM with communication

Ethernet port  
Remote switch  
Fused IEC receptacle  
25pin 485/TTL

### OPTIONS

- Ethernet/RS485/232 Control
- Cable adapters to accept all Mfg light guides

Input range:	90 - 264 Vac; 120 - 300 Vdc
Frequency:	47-63 Hz
Inrush current:	50 A max., cold start @ 25 °C
Efficiency:	88% typical at full load
EMI/RFI:	FCC Class B conducted; CISPR22 Class B conducted; EN55022 Class B conducted; VDE0878PT3 Class B conducted
Safety ground leakage current	275 µA @ 50/60 Hz, 264 Vac input
Output Maximum power:	100 W for convection (80 W for LPS102-M) 150 W with 30 CFM forced air (120 W for LPS102-M)
Adjustment range:	± 10% minimum on the main outputs
Fan output	12 V @ 1 A isolated, ± 10%
Hold-up time:	10 ms @ 150 W load, 120 Vac input
Overload protection:	Short circuit protection on all outputs. Case overload protected @ 110-160% above rating
Overvoltage protection:	15-35% above nominal output

\* -Specifications subject to change without notice

### FEATURES

- Patent pending collection optics and cutting edge LED technology combine to outperform 150W halogen EKE lamps in power, life, and color temperature with fiber bundle diameters up to 10mm.
- Long life (50,000 hours) solid state device eliminates lamp change for up to 24 years!
- Daylight white 6000K color temperature.
- Uses 50% less power to produce more than 2X output power. No wasted IR component.
- Less than 15% decline in output over the usable life.
- 100/120/240V 50/60C Universal power supply.
- Individual adapters permit the use of all fiber optic brands.
- Thermal protection via on-board sensor.
- OEM configurations available.
- UL153 certified, CE marked.
- Ethernet/RS485 with TTL trigger offers complete control including strobing, over-driving and intensity control (Optional).  
Overall Height: 5" (127 mm)  
Overall Width: 7.625" (194 mm)  
Overall Depth: 7.75" (197 mm)  
Unit Weight: 6lbs. (2.72 kg) including cord.

FTI offers a family of fiberoptic illuminators unsurpassed in quality and performance. Exceptional value, proprietary features, and a large selection of customizing options and accessories make the product family adaptable to any need.

P/N	Description	Maximum Aperture	Voltage Cycles	Color Temperature
FTIII22039-M	Standard Industrial LED Light source	.500" (12mm)	100-230 50/60	6000K
FTIII22025-R4EM	LED Light source w/control	.500" (12mm)	100-230 50/60	6000K



CORPORATE HEADQUARTERS  
**fiberoptics technology incorporated**  
ESTABLISHED 1977

1 Quasset Road, Post Office Box 286, Pomfret, Connecticut 06258  
PHONE 800.433.5248 • FAX 860.928.7664 • WEBSITE: www.fiberoptix.com • E-MAIL: info@fiberoptix.com

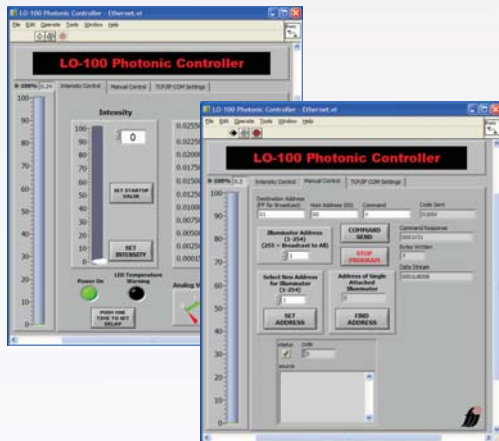
# DATA, COMPONENTS and ACCESSORIES

## Ethernet/485 Communication interface for LO100

State-of-the-Art lighting control includes traditional communication connectivity AND the latest wired or wireless Ethernet protocol, in a do-it-all standard package!



Rear of FTIII22039-R4EM showing RJ45, Remote switch, and DB 25 pin connectors



Actual screen shot of included control software, which verifies operation and demonstrates capability.

- Communication protocol allows control of the light source via Smart camera or TTL signal. (No manual trigger)
- Run continuously or intermittent from 10 microseconds to 14 milliseconds (triggered, software controlled)
- Continuous intensity can be adjusted locally or with wired remote, or through the control from 0-100% in 4096 steps
- When connected through the RJ45 ethernet port, up to 254 illuminators can be uniquely configured. (RS232 communication can control only one unit.)
- When controlled by intermittent trigger, user may overdrive intensity by as much as 67% (67% over 100%) to maximize process speed.
- Up to 50,000 pulses/second can be accepted.
- User programming via ASCII commands - command set available from Integrity Instruments 485M300 Series I/O Modules Manual
- 0-5 volt input-  
3V is 100% intensity for continuous on usage.  
5V is over driving intensity by 167% (intermittent only)
- Intensity and pulse time settings are stored in on-board flash Memory.
- 25pin connector serves as host for the TTL input and 485 serial port. Wired remote can also be routed to control intensity.
- Gated signal from a smart camera will also control the "on" duration.
- Entire package is integral to the unit... Comes complete with separate installation/startup manual and demonstration software.



CORPORATE HEADQUARTERS

***fiberoptics technology incorporated***

ESTABLISHED 1977

1 Quasset Road, Post Office Box 286, Pomfret, Connecticut 06258

PHONE 800.433.5248 • FAX 860.928.7664 • WEBSITE: [www.fiberoptix.com](http://www.fiberoptix.com) • E-MAIL: [info@fiberoptix.com](mailto:info@fiberoptix.com)