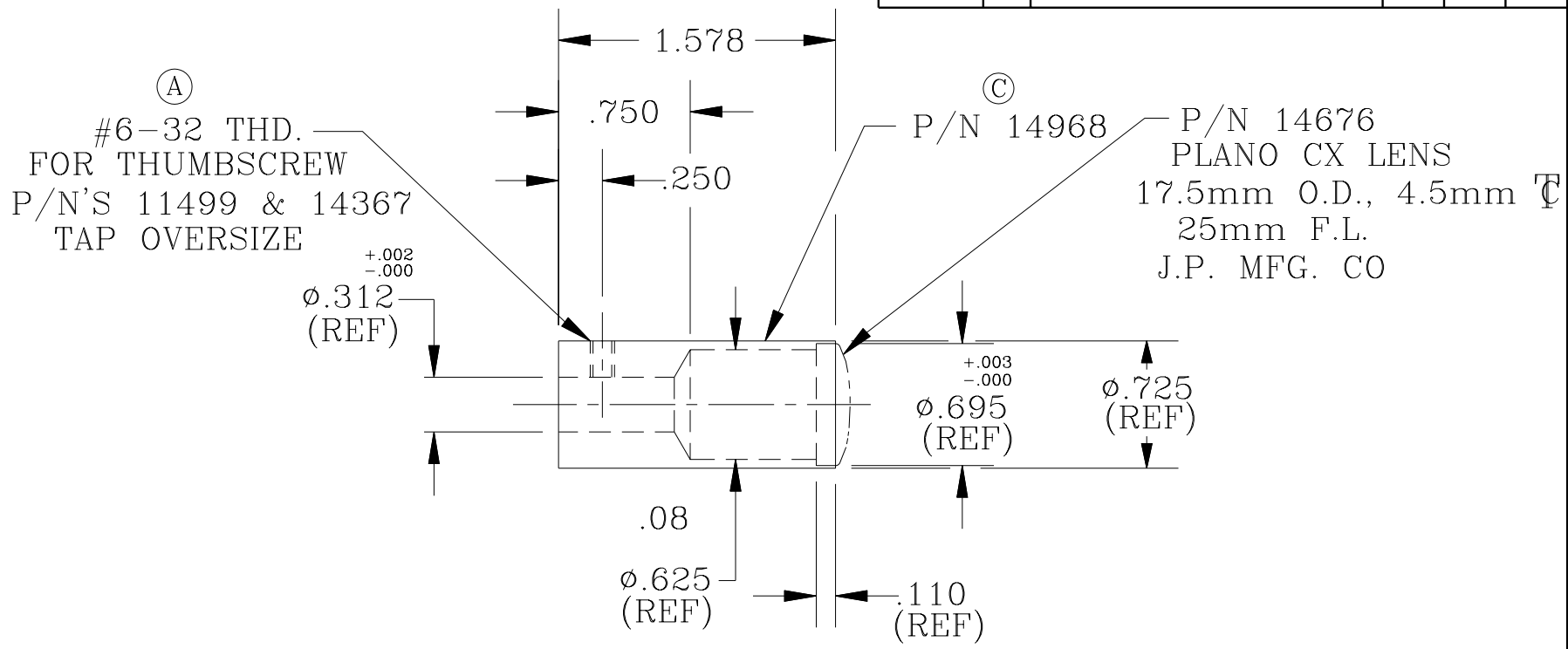


DATE	SYM	REVISION RECORD	AUTH.	DR.	CK.
12/13/96	A	ADDED NOTES	RM	GEB	
6/12/97	B	+ .003 / - .000 WAS ± .005	BLB	PM	
10/24/97	C	ADDED P/N 14968		"	



NOTES:

- 1) REMOVE BURRS & SHARP EDGES.
- 2) DIA'S. TO BE CONC. W/IN .004 T.I.R.
- 3) SURF. FIN. \checkmark_{32} OR BETTER.

This drawing is the property of FIBEROPTICS TECHNOLOGY, INC. and is proprietary in general and in detail. Its contents shall not be revealed to outside parties without the written consent of FIBEROPTICS TECHNOLOGY, INC.

TOLERANCES (EXCEPT AS NOTED)		FIBEROPTICS TECHNOLOGY INC.	
DECIMAL .XXX ± .005	SCALE FULL	DRAWN BY PM	
DECIMAL .XX ± .010	APPROVED BY		
ANGULAR ± 2°	DATE 11/20/96	DRAWING NUMBER FTIIG10822	
		REV. C	

FINISH: BLACK HARDCOAT

MATERIAL: 6061-T6 ALUM.

TITLE 5/16" G.N.L.G. LENS HOUSING